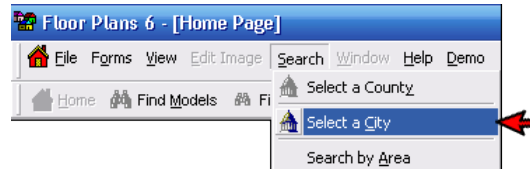


# The Inside Tract™

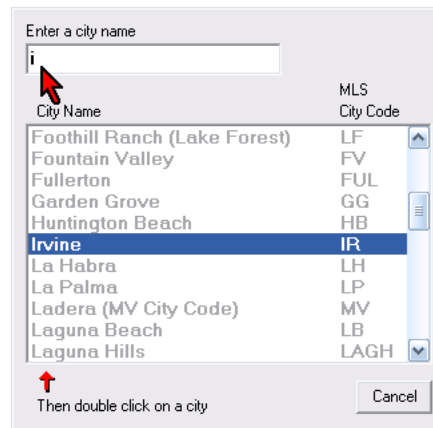
Floor Plans, Maps & Tract Codes

## Quick Start

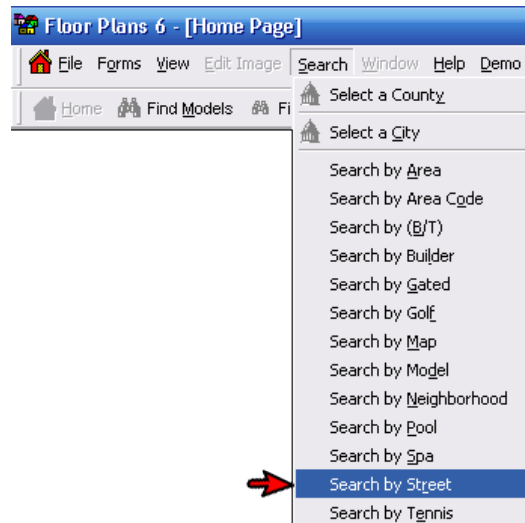
- step 1** On the Menu Bar click on Search  
Select Search by City  
- the City Dialog Box will appear



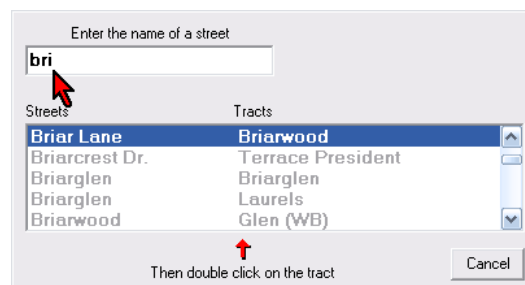
- step 2** The white box at the top of the City Dialog Box is an Input Box  
Type the city name in the Input Box  
Press the Enter key



- step 3** On the Menu Bar click on Search  
Select Search by Street  
- the Street Dialog Box will appear



- step 4** Type the street name in the Input Box  
Press the Enter key



All the information for this Tract will then appear.