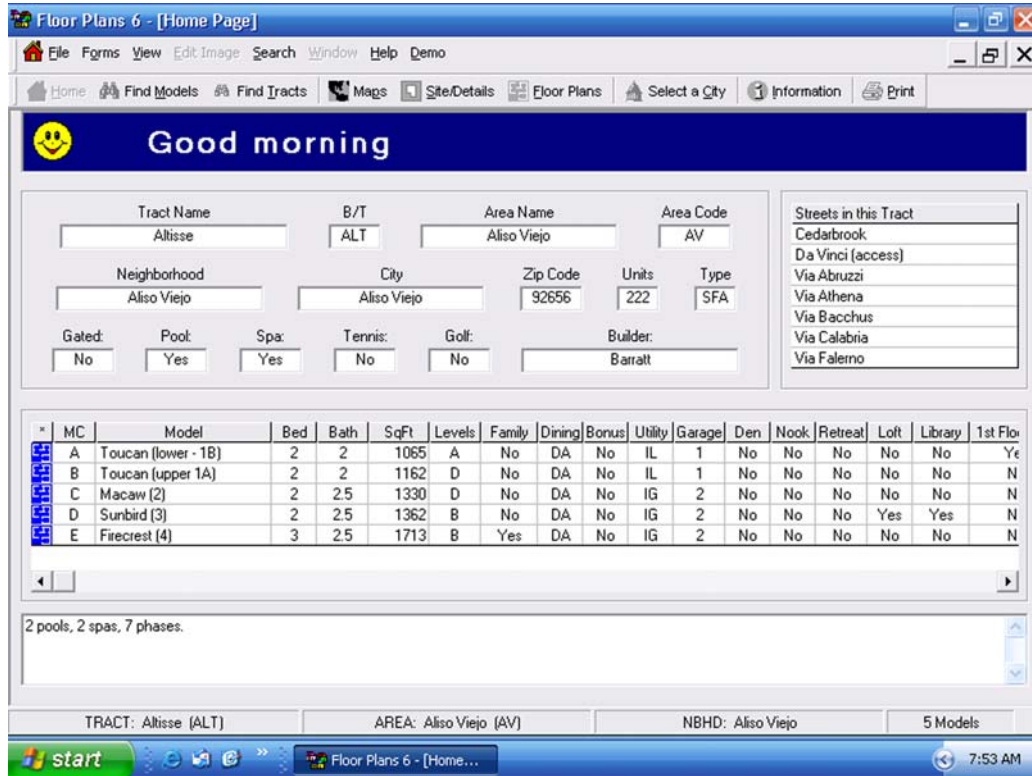


# The Inside Tract™

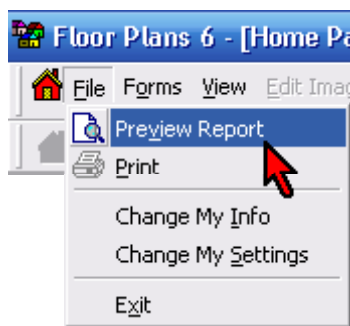
Floor Plans, Maps & Tract Codes

## How to select a printer

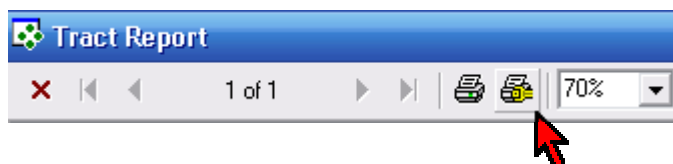
### step 1 Select A Tract



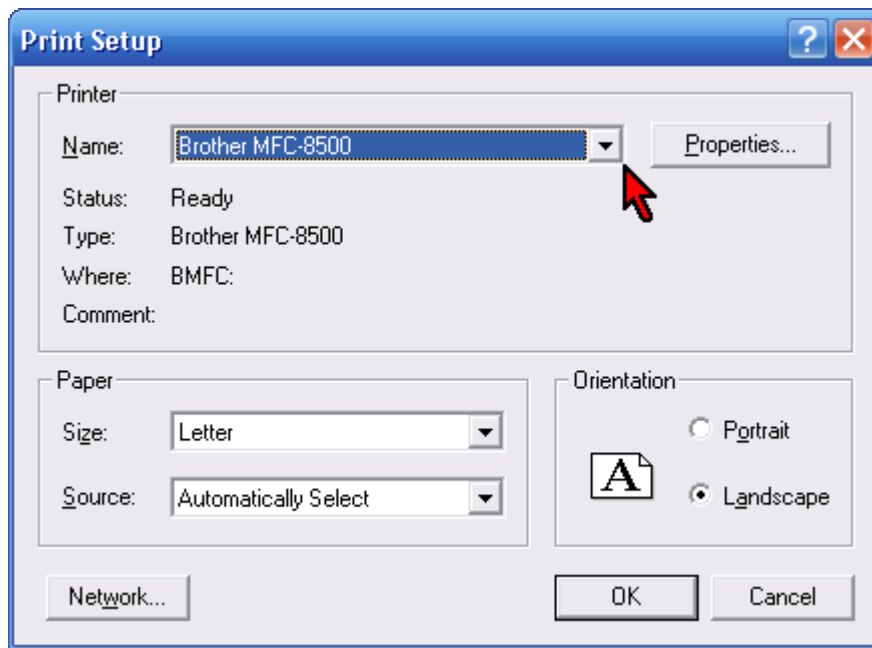
### step 2 Click File > Preview Report



### step 3 Click on the Printer Setup button



**step 4** Select Your Printer



**Alternate Method:**

Click on **Start > Settings > Printers and Faxes**

and change the default printer by **right clicking** on the printer icon and choosing **Set as Default Printer**.

If you don't have a printers and faxes icon after clicking on start, the go to the **Control Panel** and you'll find it there.